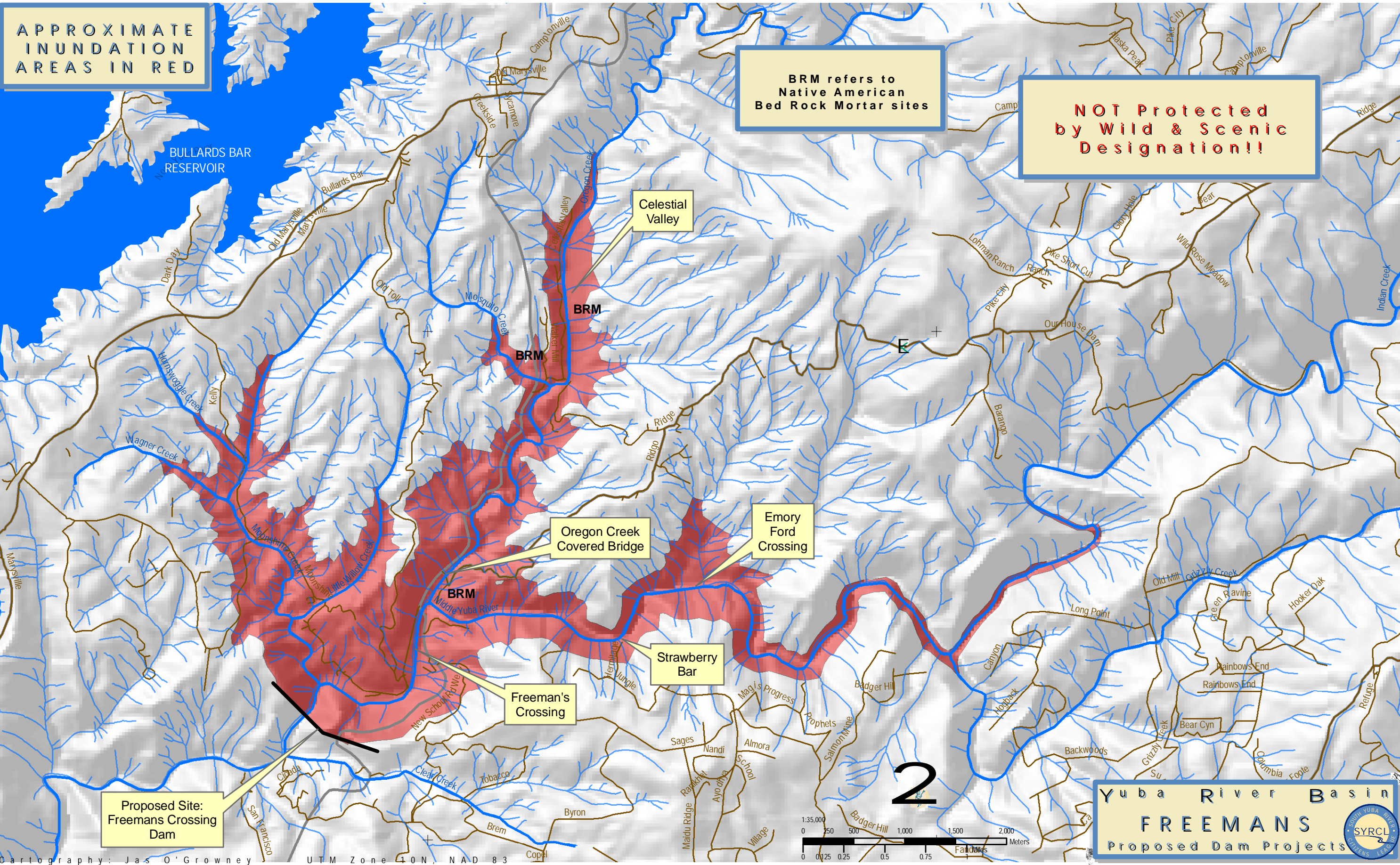


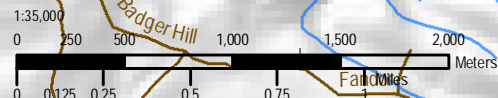
APPROXIMATE  
INUNDATION  
AREAS IN RED

BRM refers to  
Native American  
Bed Rock Mortar sites

**NOT Protected  
by Wild & Scenic  
Designation!!**



Proposed Site:  
Freemans Crossing  
Dam



Yuba River Basin  
FREEMANS  
Proposed Dam Projects

